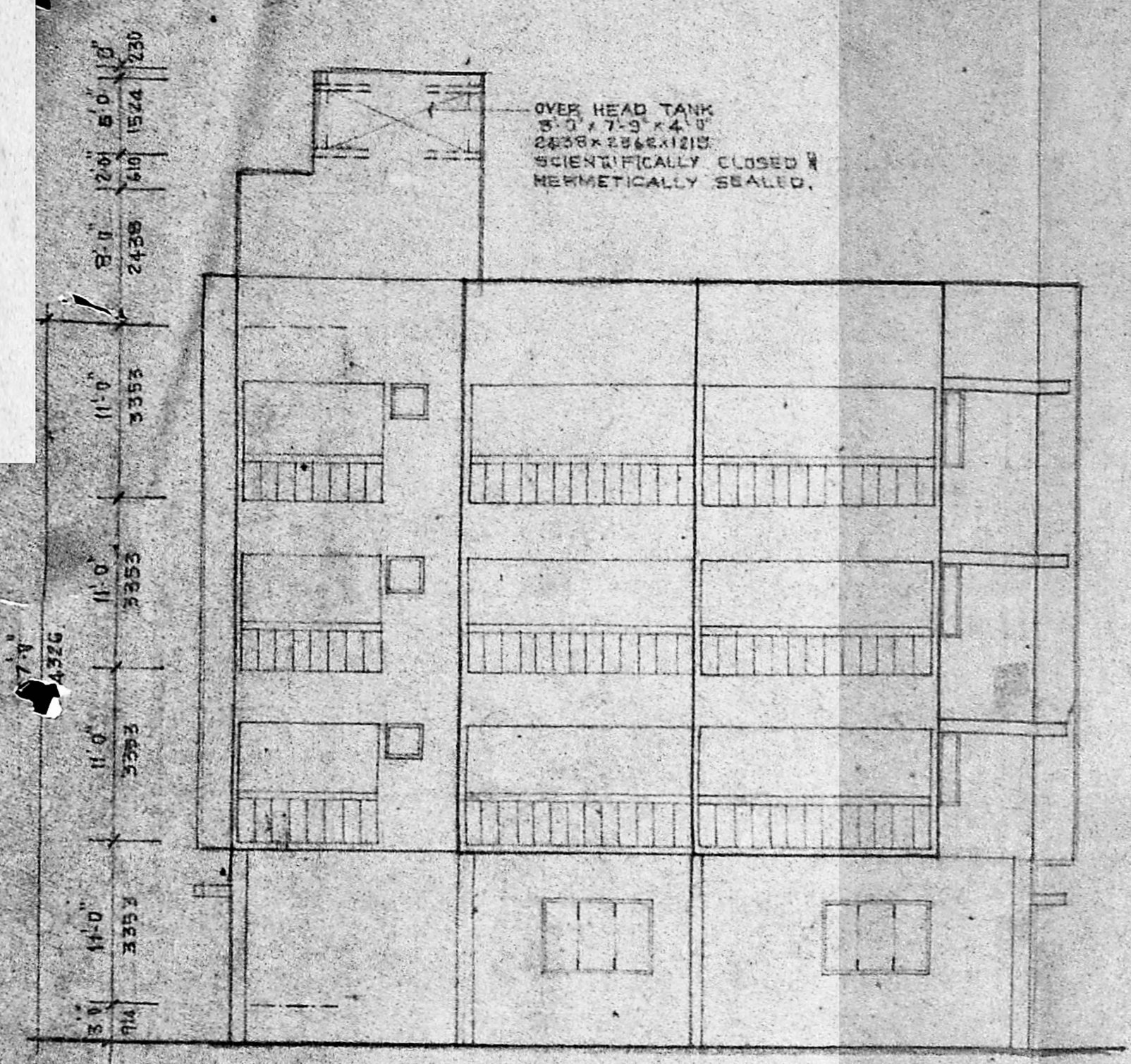


SPECIFICATION

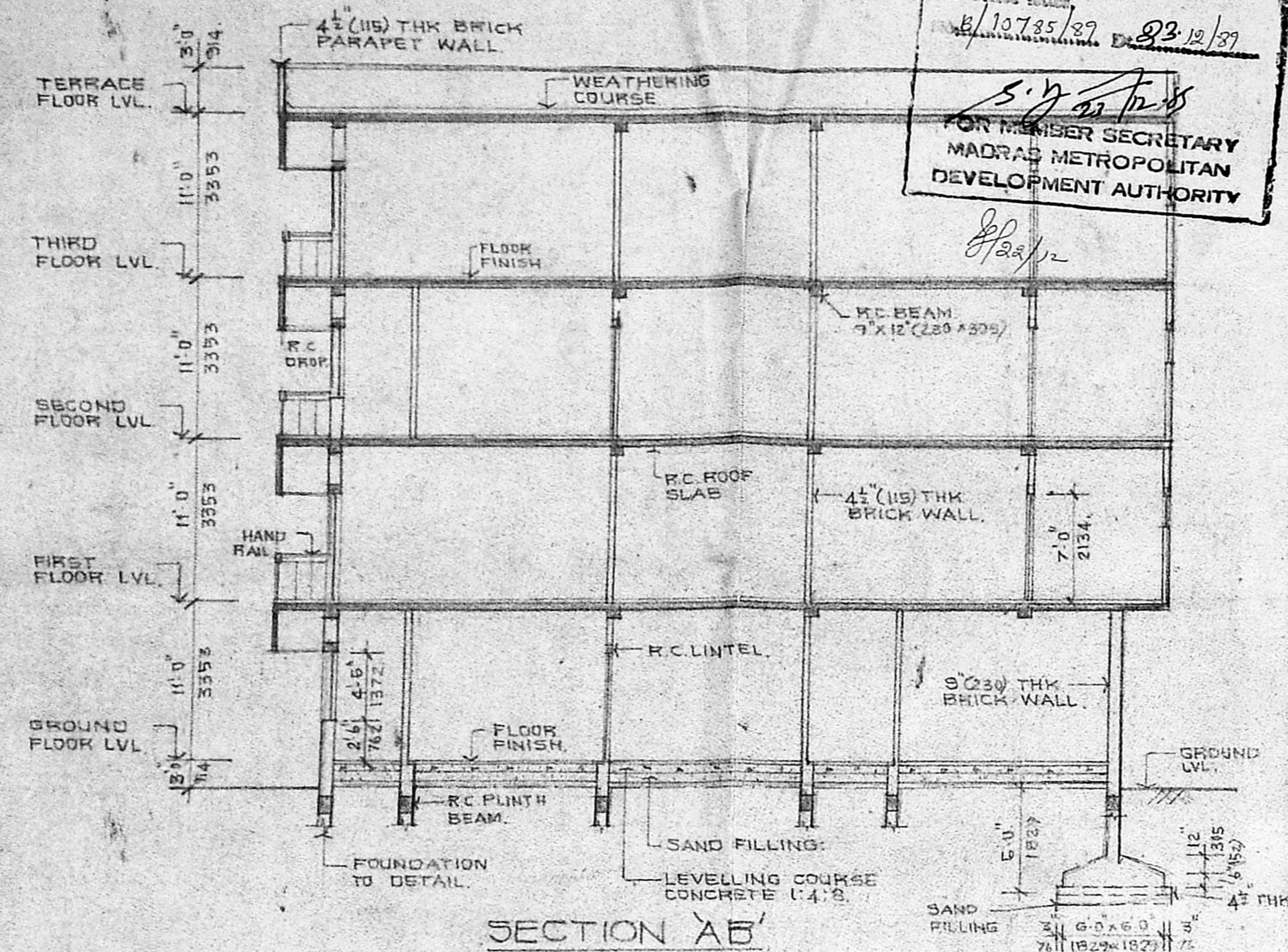
FOUNDATION: R.C. ISOLATED COLUMN FOOTINGS SUBTEND REINFORCED WITH C.M. 1:3, P.C.C. 1:4:8 & SAND FILLING
 BRICK WORK: BRICK WORK IN C.M. 1:4 IN BASEMENT & 1:5 IN SUPER STRUCTURE.
 ROOFING: R.C. SLAB 12.4 WITH C/B OF REINFORCEMENTS
 WATER PROOFING: SLOPE CONCRETE WITH BRICK TELLER IN LIME AND ONE COURSE OF FLAT TILES SET IN C.M. 1:3 MIXED WITH CAUSE OF PLASTERED WITH C.M. 1:3 RUBBED SMOOTH WITH 12 MM THK. C.M. 1:3 PLASTERING WALLS & TERRACE IN 12 MM THK. C.M. 1:3 FLOORING: GROUND FLOOR MOSAIC FLOORING OVER A LAYER OF P.C.C. 1:4:8 & SAND FILLING
 UPPER FLOORS MOSAIC FLOORING OVER A R.C. SLAB
 FINISHES: INTERIOR PAINTED WITH DRY EMULSION
 EXTERIOR PAINTED WITH CEMENT PAINT
 DOORS & WINDOWS PAINTED WITH SYNTHETIC EMULSION PAINT OVER A FINISH COAT OF WOODEN TRIM

SCHEDULE OF JOINERY

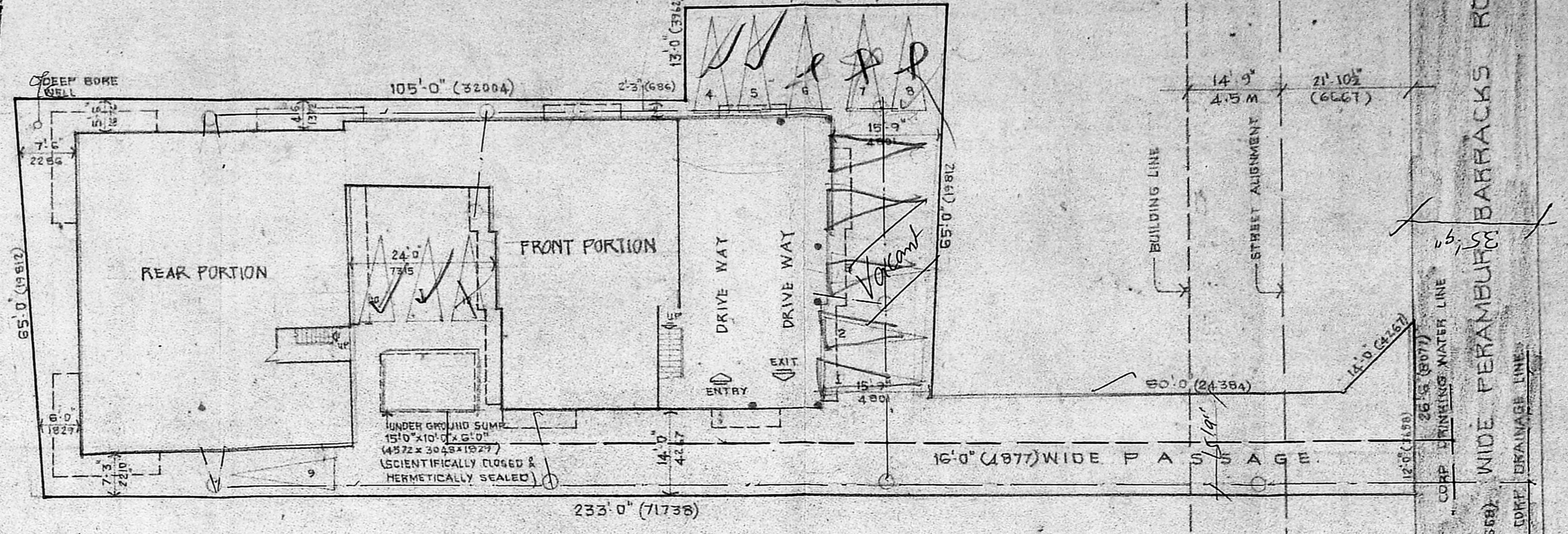
QTY	DESCRIPTION	UNIT	REMARKS
1087	TEAK WOOD FLUSH DOOR	234	
314	T.W. GLAZED WINDOW	234	
888	T.W. GLAZED WINDOW	234	
793	T.W. GLAZED WINDOW	234	
762	T.W. GLAZED WINDOW	234	
2425	T.W. GLAZED WINDOW	1372	
1828	T.W. GLAZED WINDOW	1372	
1828	T.W. GLAZED WINDOW	1372	
1372	T.W. GLAZED WINDOW	1372	
1372	T.W. GLAZED WINDOW	1372	
457	T.W. GLAZED WINDOW	1372	
123	T.W. GLAZED WINDOW	1372	
324	T.W. GLAZED WINDOW	1372	
419	T.W. GLAZED WINDOW	1372	
762	T.W. GLAZED WINDOW	1372	



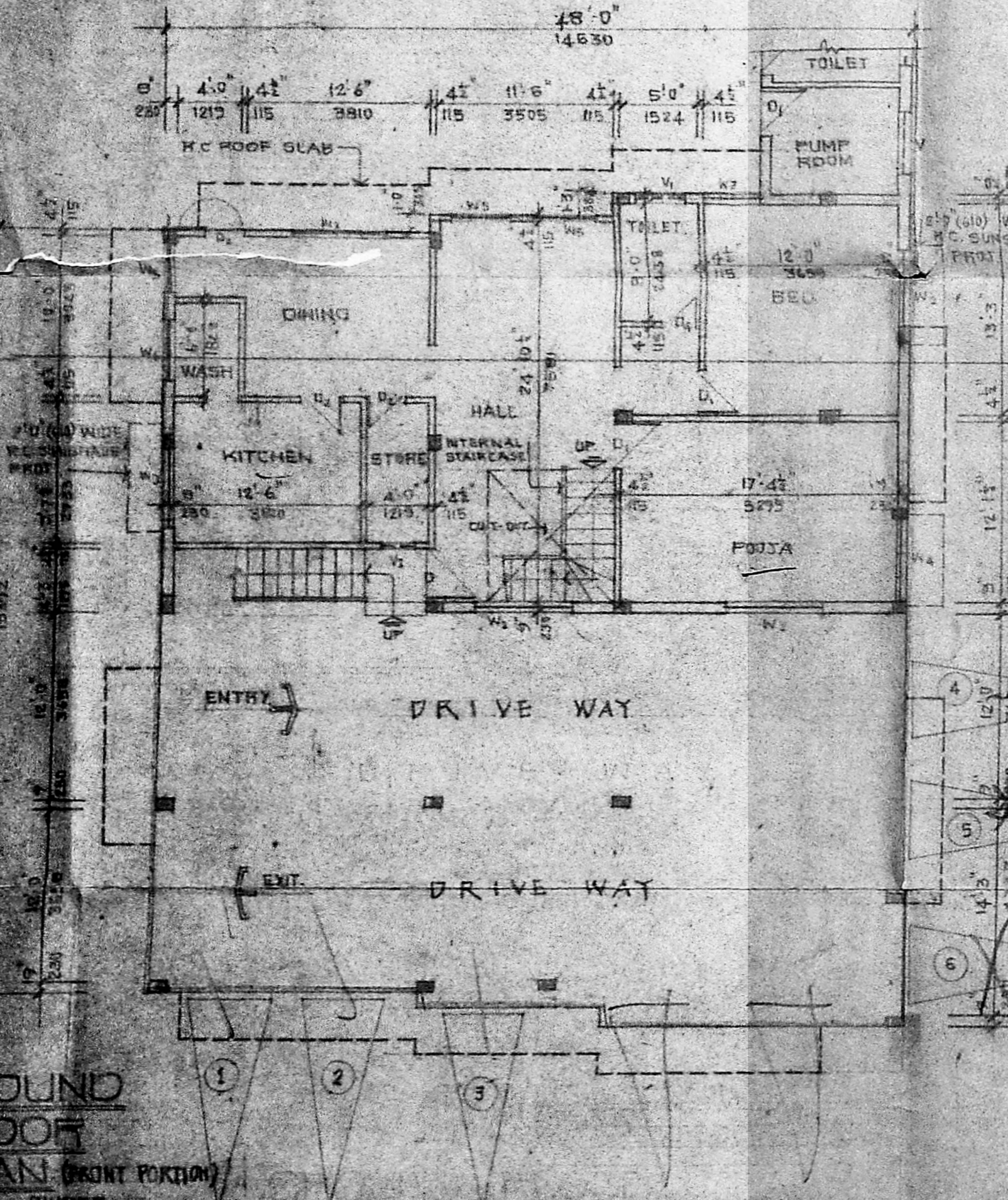
ELEVATION.



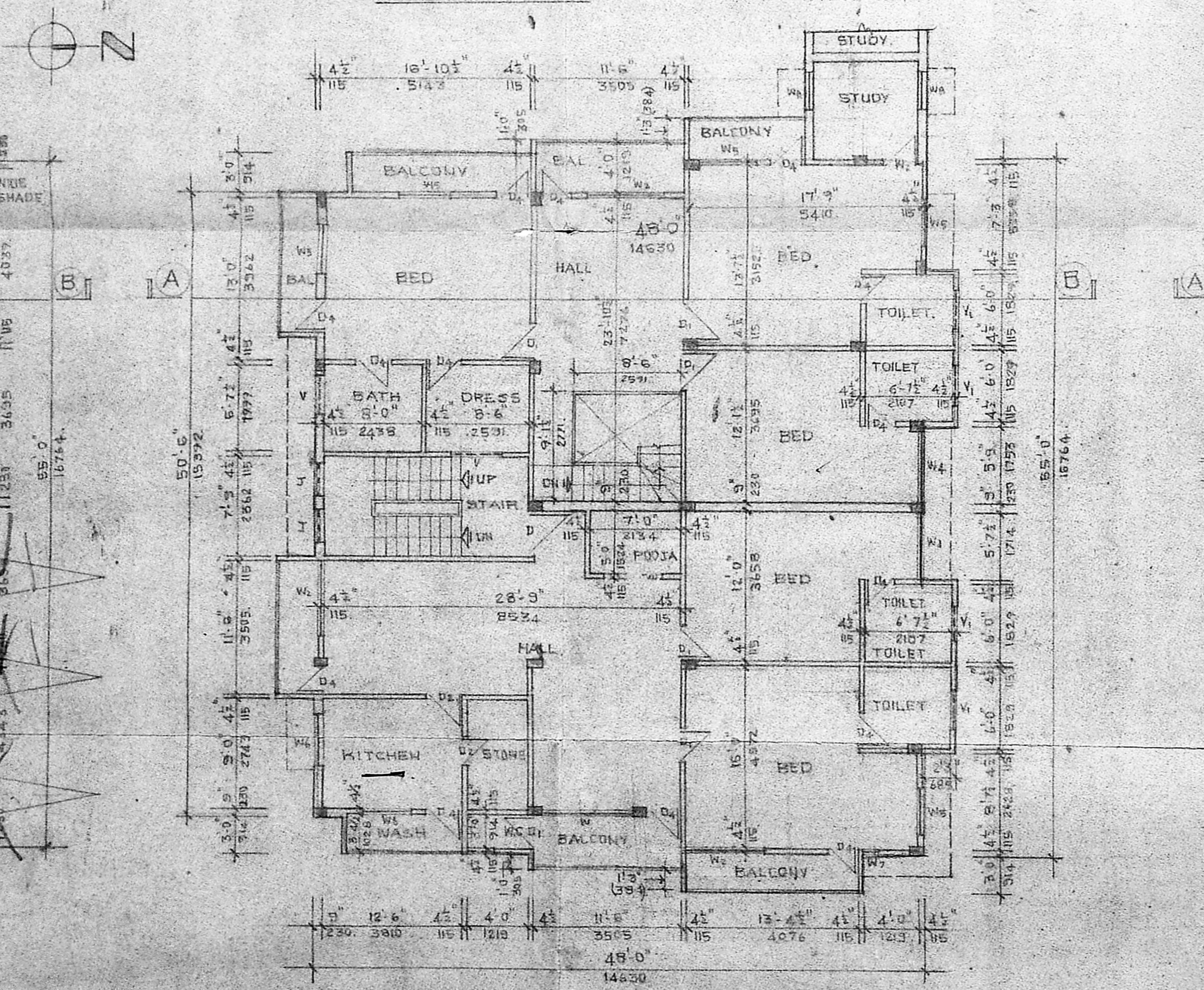
SECTION AB



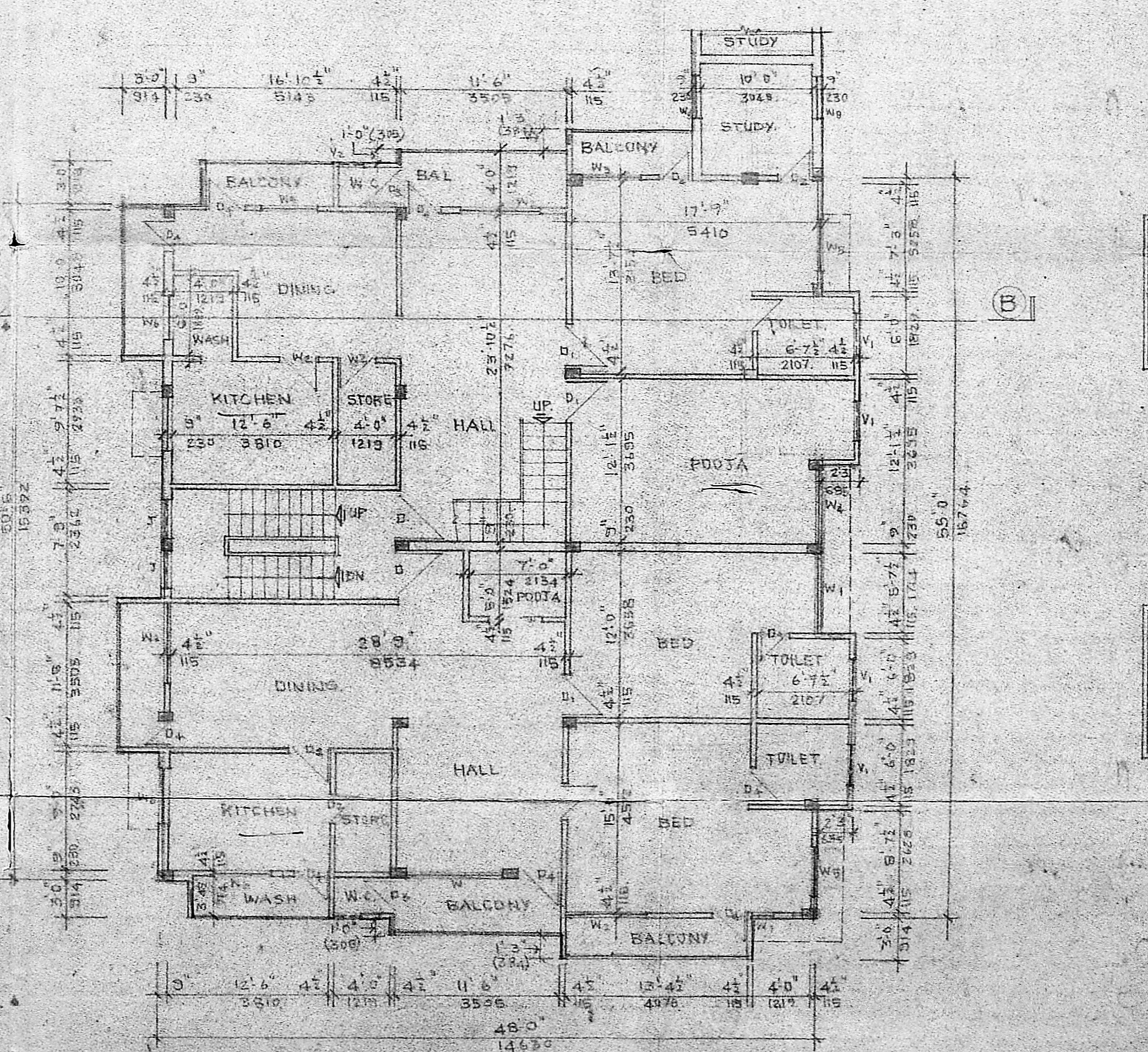
SITE PLAN
SCALE 1"=16'-0" (1:50)



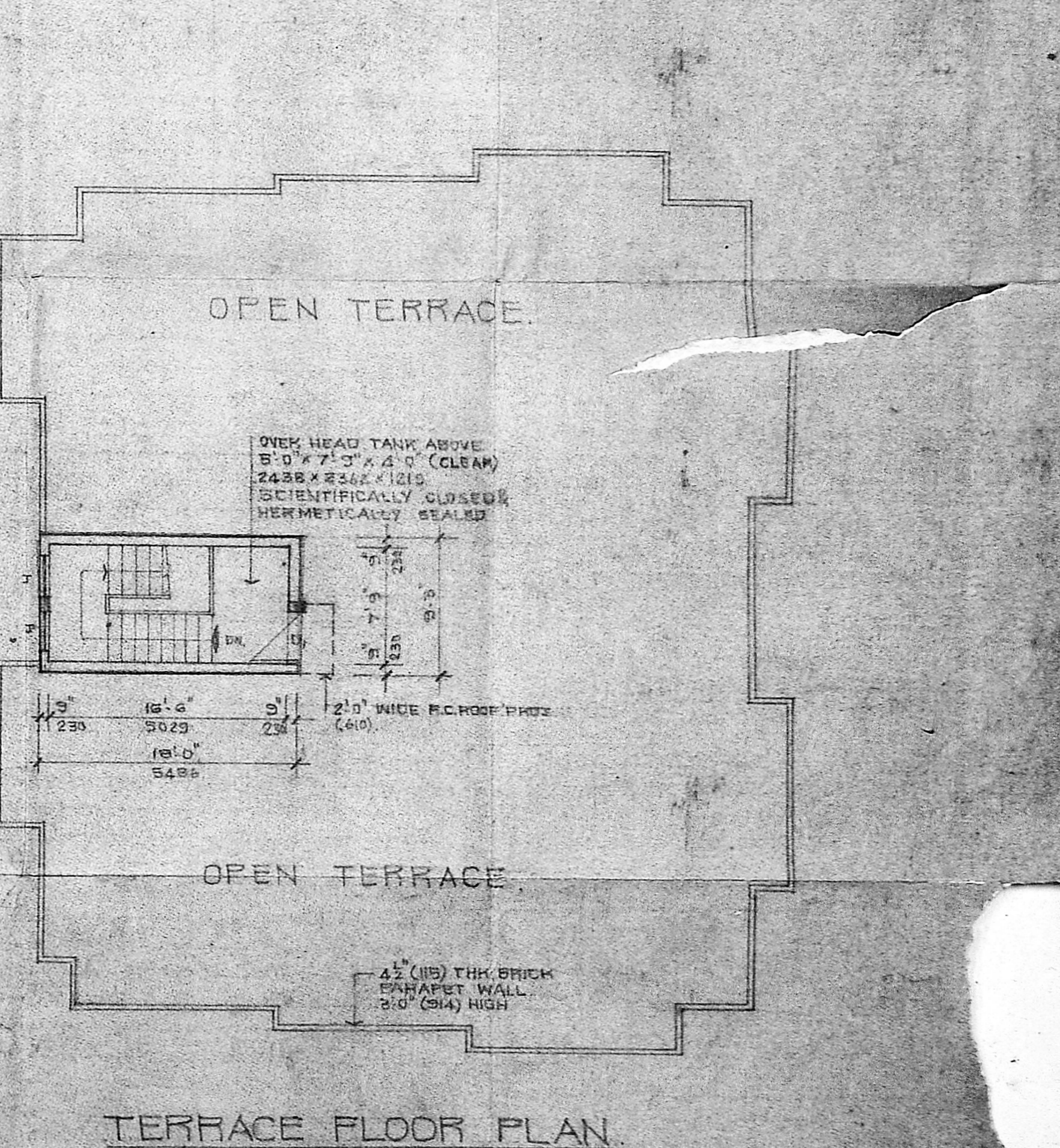
GROUND FLOOR PLAN



FIRST & THIRD FLOOR PLAN



SECOND FLOOR PLAN



TERRACE FLOOR PLAN

- 1. ...
- 2. ...
- 3. ...
- 4. ...
- 5. ...
- 6. ...
- 7. ...
- 8. ...
- 9. ...
- 10. ...
- 11. ...
- 12. ...
- 13. ...
- 14. ...

COLOUR INDEX

- PROPOSED WORK.
- ROAD.
- BOUNDARY LINE
- DRAINAGE LINE
- DRINKING WATER LINE

LICENSED SURVEYOR
SATNAM SINGH ARCHITECT & INTERIOR DESIGNER
 100 Perambur High Road
 Solive, Madras - 600 010

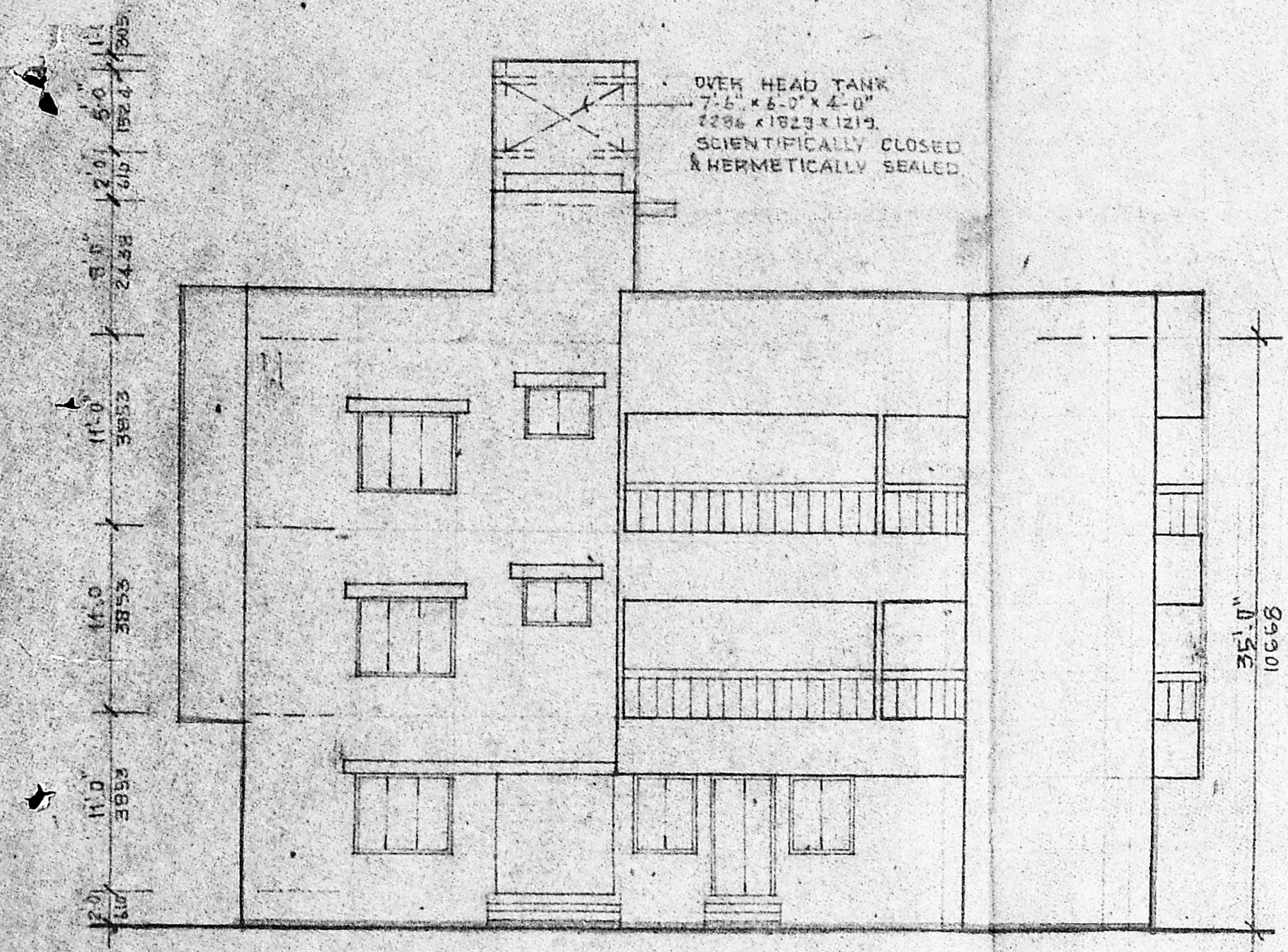
PROPOSED FLATS AT NO 101A &
 101-B, PERAMBUR BARRACKS ROAD,
 YEPERY, MADRAS - 600 007,
 R 5 NOS. 839/1, 839/4 & 839/5,
 BLOCK NO 15, DIVISION NO 64

SCALE	1"=16'-0" (1:50)
DATE	
DRAWN	
CHECKED	

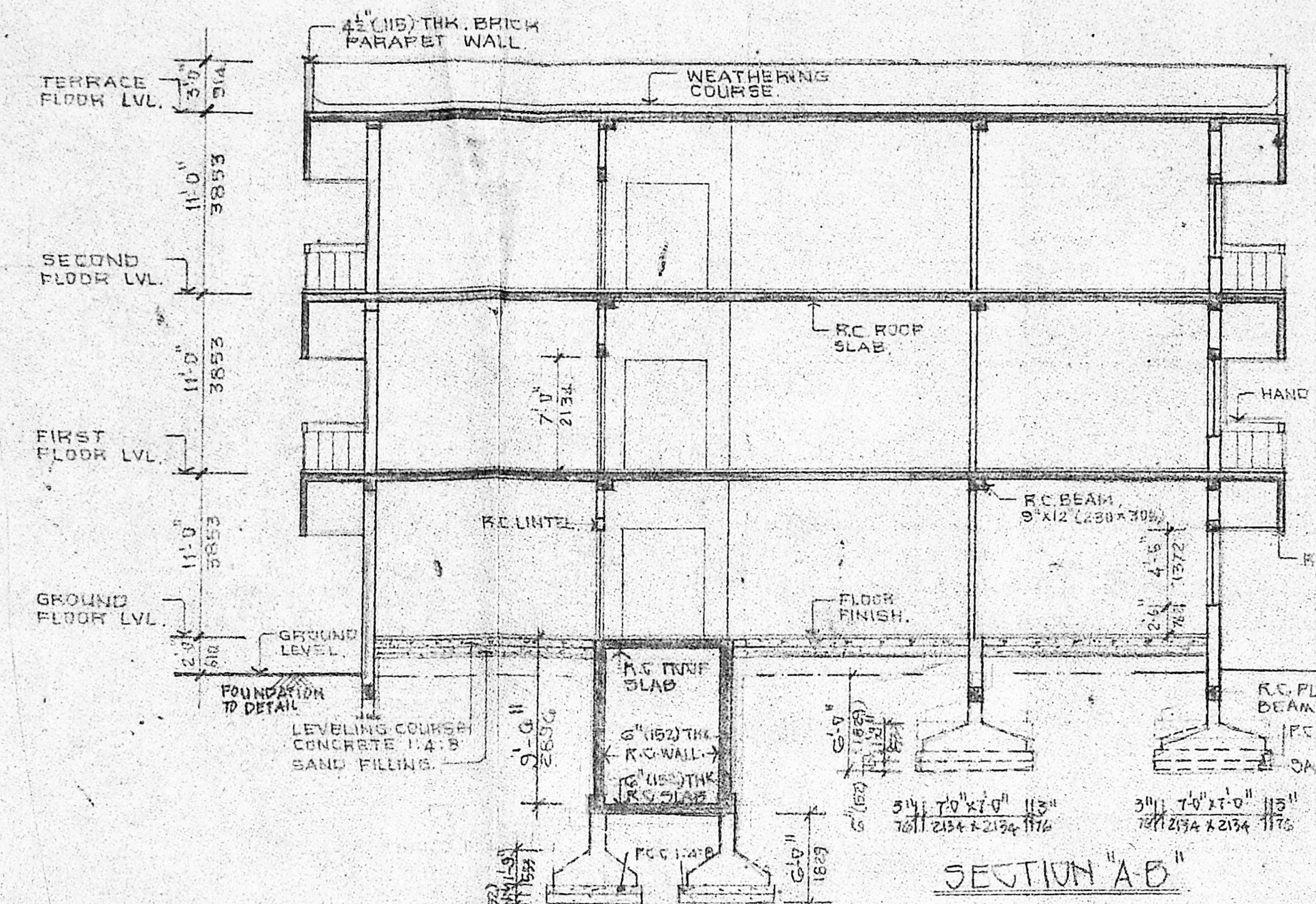
CORPORATION DRAWING

ARCHITECT
SATNAM SINGH ARCHITECT & INTERIOR DESIGNER
 100 PERAMBUR HIGH ROAD
 KELLY'S, MADRAS - 600 010

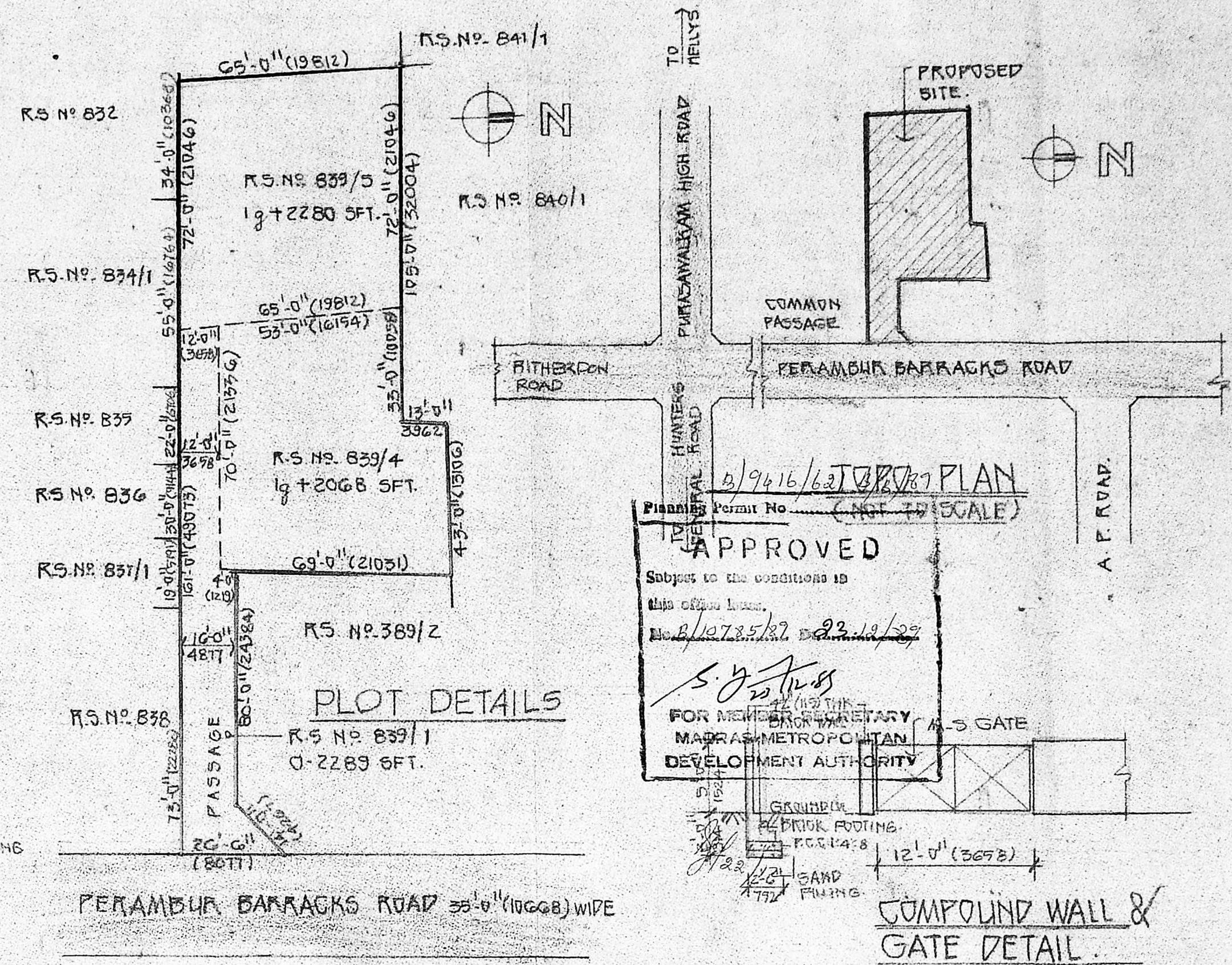
8/9/16/62 9/6/37
 Planning Permit No
APPROVED
 Subject to the conditions in
 the office file
 16/10/35/37 22-10/37
S. N. S. B.
 MEMBER SECRETARY
 MADRAS METROPOLITAN
 DEVELOPMENT AUTHORITY



ELEVATION

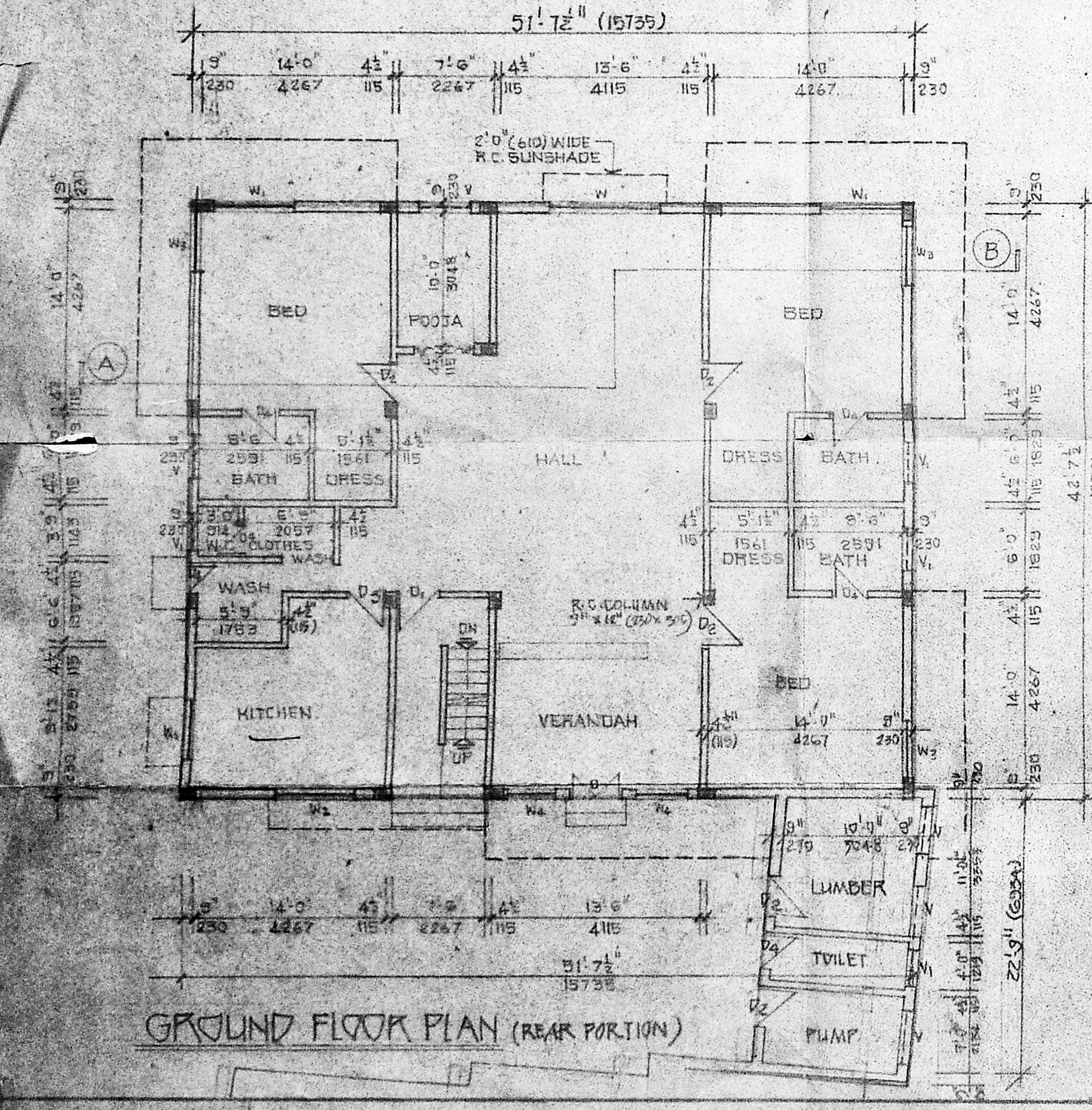


SECTION "A-B"

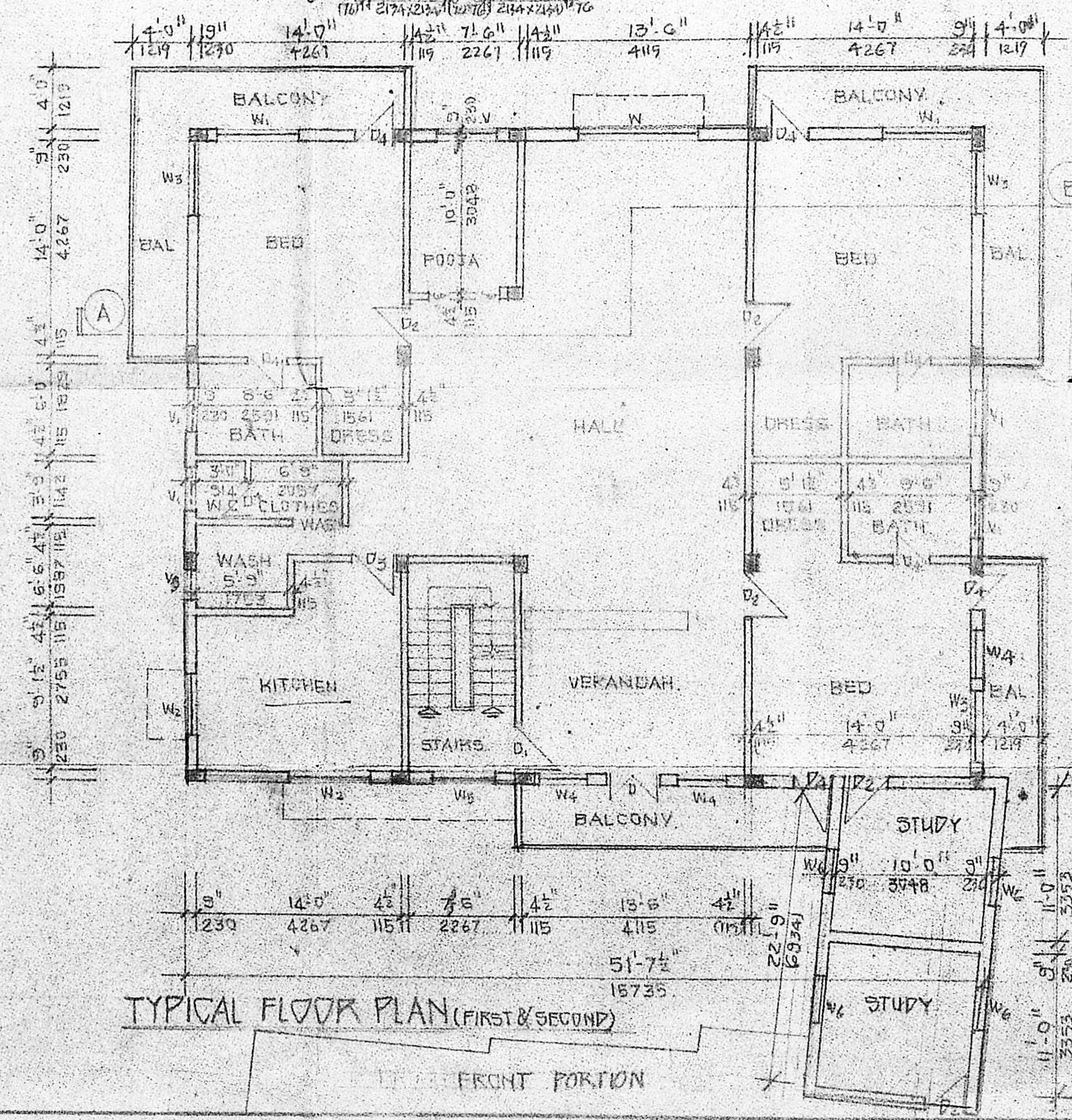


PLOT DETAILS

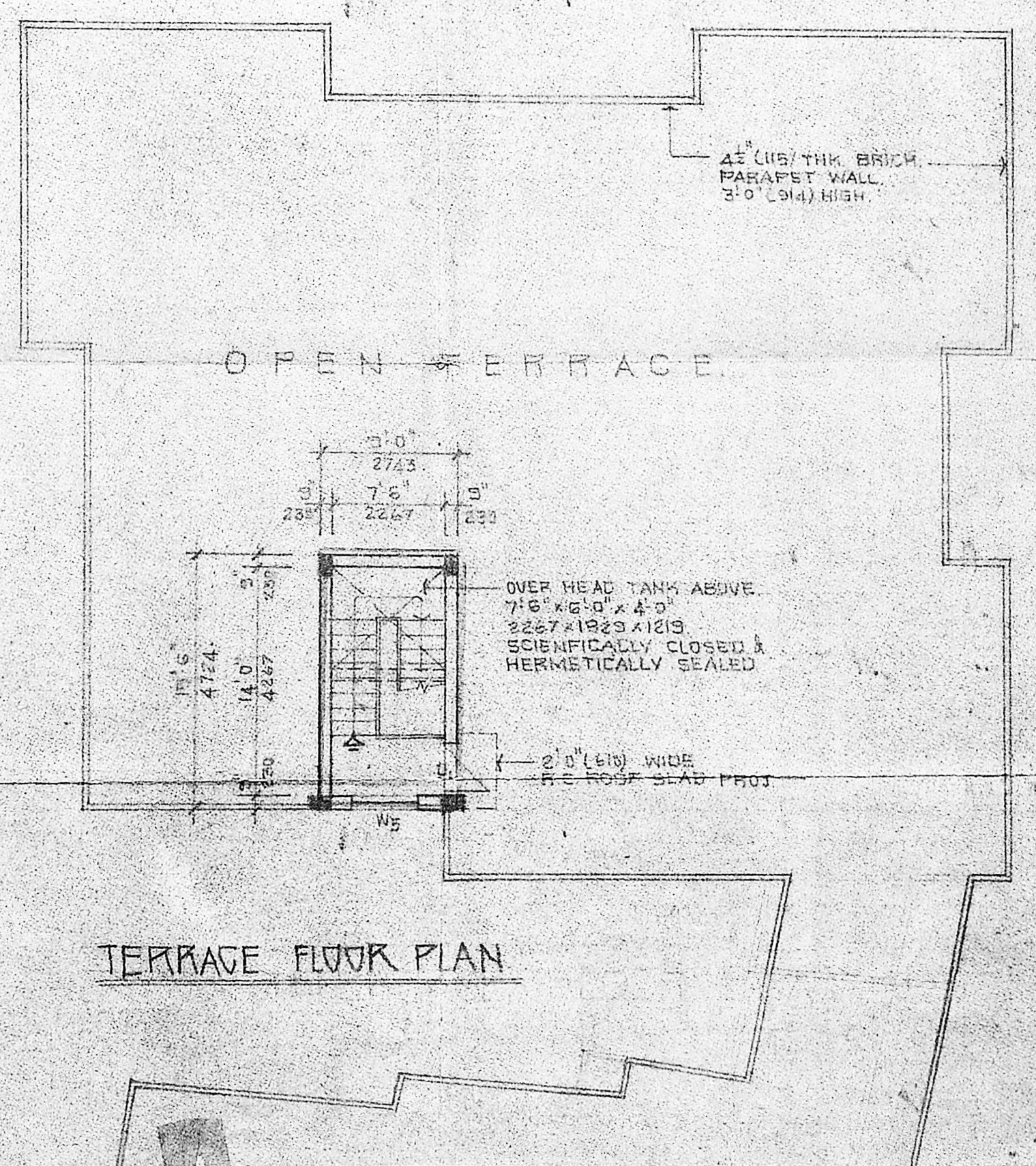
COMPOUND WALL & GATE DETAIL



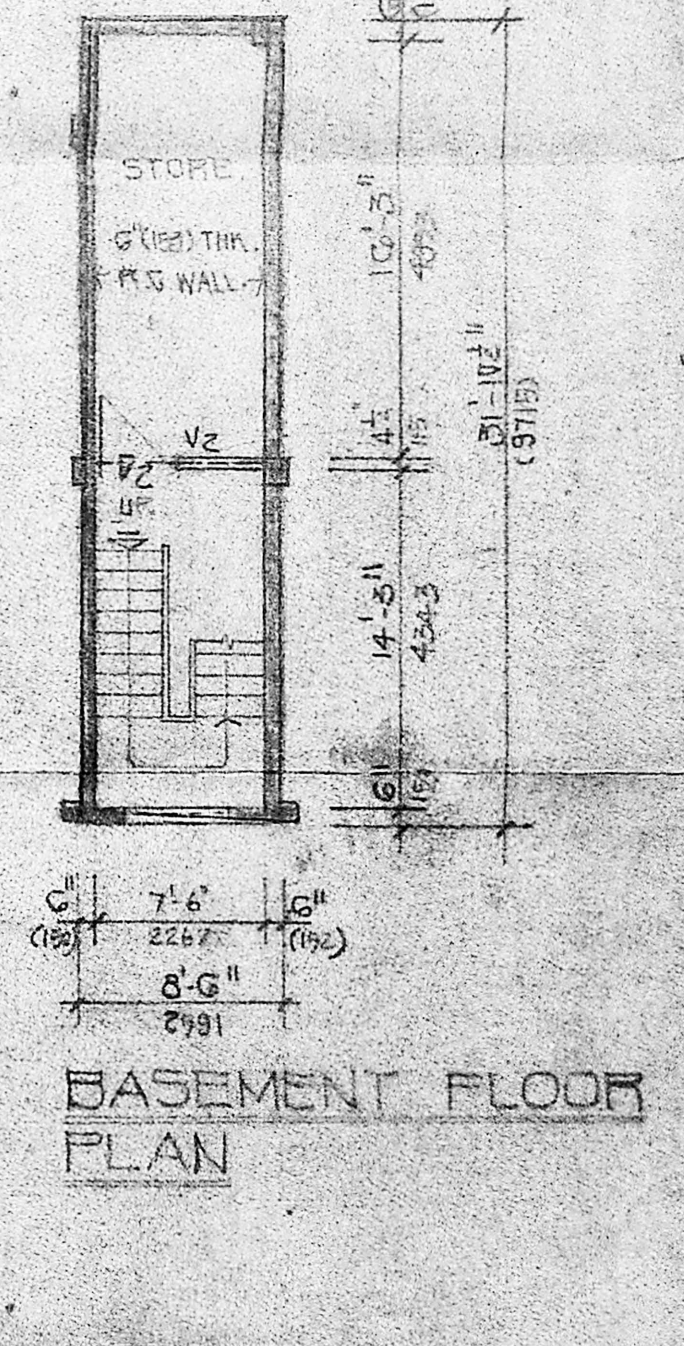
GROUND FLOOR PLAN (REAR PORTION)



TYPICAL FLOOR PLAN (FIRST & SECOND)



TERRACE FLOOR PLAN



BASEMENT FLOOR PLAN

COLOUR INDEX

- PROPOSED ROAD
- BOUNDARY LINE
- DRINKING WATER LINE
- DRAINAGE LINE

OWNERS:

- J. J. J.
- S. S.
- M. M.
- S. S.
- D. D.
- S. S.
- M. M.
- S. S.
- J. J.
- A. A.
- T. T.
- S. S.
- P. P.

JOINTLY OWNERS:

S. Rajan 13/8/89

TABLE:

D ₁ 4'-0" x 7'-0"	1213 x 2134	TEAK WOOD FLUSH DOOR
D ₂ 3'-6" x 7'-0"	1067 x 2134	"
D ₃ 3'-0" x 7'-0"	314 x 2134	"
D ₄ 2'-3" x 7'-0"	828 x 2134	"
D ₅ 2'-6" x 7'-0"	762 x 2134	"
W ₁ 8'-0" x 4'-6"	2438 x 1372	T.W. GLAZED WINDOW
W ₂ 5'-0" x 4'-6"	1524 x 1372	"
W ₃ 4'-0" x 4'-6"	1219 x 1372	"
W ₄ 3'-0" x 4'-6"	914 x 1372	"
V ₁ 4'-0" x 2'-0"	1219 x 610	T.W. GLAZED VENTILATOR
V ₂ 3'-0" x 2'-0"	914 x 610	"
V ₃ 2'-0" x 2'-0"	2274 x 610	"
N ₅ 4'-0" x 3'-0"	1219 x 914	T.W. GLAZED WINDOW
N ₆ 2'-0" x 3'-0"	610 x 914	T.W. GLAZED VENTILATOR
W ₆ 3'-3" x 4'-6"	994 x 1372	T.W. GLAZED WINDOW

LICENSED SURVEYOR

SATNAM SINGH S.Arch. and Architect & Interior Designer

LICENSED SURVEYOR CLASS-I No. RA-31

908 Purnanagar High Road, Kalyani, Madras-600 010

PROPOSED FLATS AT NO. 101-A & 101-B, PERAMBUR BARRACKS ROAD, VEPERY, MADRAS-600 007.

R.S. NOS. 839/1, 839/4 & 839/5

DIVISION NO. 64, BLOCK NO. 15

CORPORATION DRAWING

SCALE: 1/8" = 1'-0" (1:100) DATE: 1987

DRAWN: E.D. CHECKED: [Signature]

ARCHITECT: SATNAM SINGH S.Arch. and Architect & Interior Designer, 908 Purnanagar High Road, Kalyani, Madras-600 010

221